

## SYK1-ATS SERIES (400A - 3500A)



### LISTWISE SCHNEIDER:

- Cabinets according to the IEC 62208 standard for electrical equipment empty enclosures IP55 low voltage.
- Paint textured epoxy-polyester resin for high corrosion protection RAL 7035 (body), RAL 7022 (baseboards)
- Robustness certified, according to IEC 62262 (IK10) with door d (6 e glass IK08
- Steel plate LAF 2m 100 m / c
- Symmetric galvanized steel structure welded profiled and laser welded held in 18 folds with vertical and horizontal drilling step 25mm.
- Pleglado doors welded steel, standard door opening 120 °, interchangeable anywhere even in the same parante can be placed 2 doors, full accessibility (unique in the market)
- Handle doors with interchangeable inserts or double bar key panels with captive screws
- Certifications BV, DNV, UL, CUL
- Declaration of conformity for anti-seismic zone 3 (6 to 8 degrees on the Richter scale)
- Dimensions 2000x800x600
- Capacity up to 1000 kg

### BUSBARS

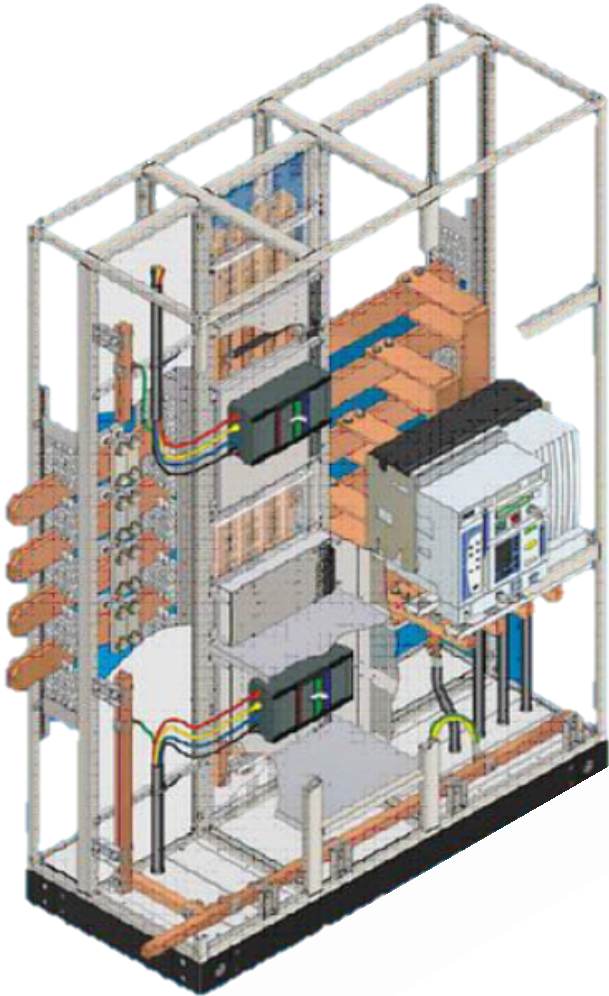
The rods are highly conductive electrolytic copper, they shall be reinforced to withstand a maximum current of short symmetrical greater than the main switch as indicated in planes for voltages of 220VAC 3Ø, 380VAC 3Ø or 460VAC 3Ø

Are minimum capacity equal to 2 times the rated capacity of the main switch, in both cases the bars must be mounted on an insulating base of good quality.

Heating of the bars is less than 65 ° C above an ambient temperature of 40 ° C.

The insulating supports of the bars are able to isolate the bars themselves full voltage

*Only Reference*



Only Reference

## C330D6-ATS SERIES (400A)

### EARTH BAR

It has a grounding bar at the bottom of the board you must install a bar for grounding, which is electrolytic high conductivity copper, painted green, section equivalent to conductor grounding calculated for feeder board. Suitable for conductor connection external ground for the main circuit and secondary circuits.

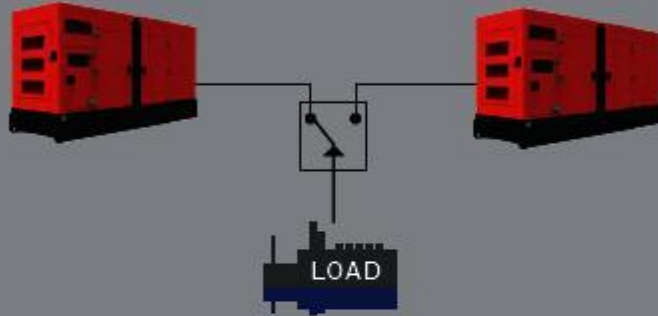
### NEUTRAL BAR

In the bottom of the board at the opposite end to the bar earth bar for connecting the neutral conductor coming from the main 220VAC 3 $\phi$ , 380VAC or 3 $\phi$  460VAC 3 $\phi$  board system was installed; as well as outputs for branch circuits. The bar will be high conductivity electrolytic copper, painted white.

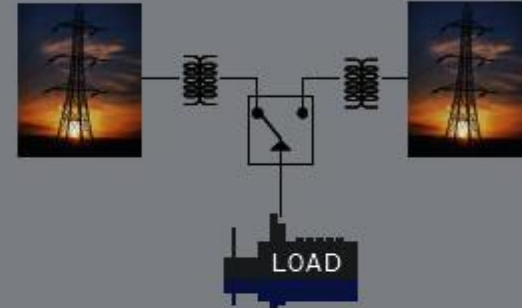
ATS - Electronic Module 400 A TO 3200A



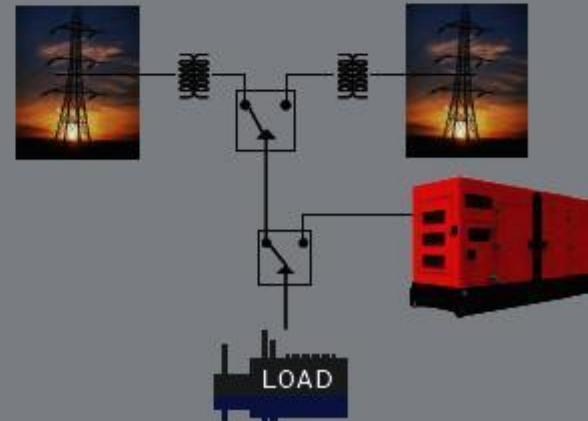
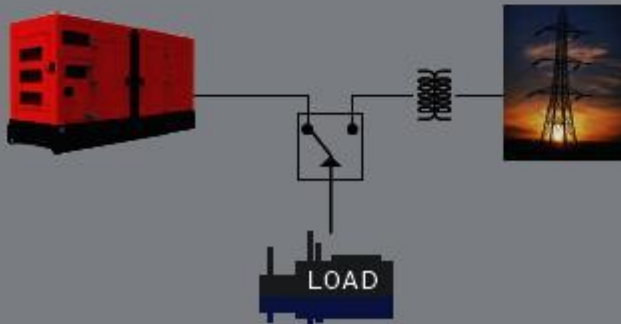
# Auto Transfer Switch



Generator to Generator



Generator to Generator



# Auto Transfer Switch

Model		C330D6-ATS Series							
The rated working current		400A	630A	700- 800A	1000-1250A	1300-1600A	2000A	2500A	3200A
The rated Isolation Voltage $U_i$		1000V	1000V	1000V	1000V	1000V	1000V	1000V	1000V
Rated Impulse Withstand Voltage $U_{imp}$		12KV	12KV	12KV	12KV	12KV	12KV	12KV	12KV
Rated Operation Voltage $U_e$		AC440V	AC440V	AC440V	AC440V	AC440V	AC440V	AC440V	AC440V
Rated Operation Current $I_e$	AC-31A	400	630	800	1250	1600	2000	2500	3200
	AC-35A	400	630	800	1250	1600	2000	2500	3200
	AC-33A	400	630	800	1250	1600	2000	2500	3200
Rated making ability		10Ie	10Ie	10Ie	10Ie	10Ie	10Ie	10Ie	10Ie
The rated breaking capacity		8Ie	8Ie	8Ie	8Ie	8Ie	8Ie	8Ie	8Ie
Rated conditional short-circuit current		70KA	70KA	70KA	100KA	120KA	80KA	80KA	80KA
Rated short-time resistance current		9KA	9KA	9KA	26KA	50KA	55KA	55KA	55KA
Conversion time		0.45S	0.45S	0.45S	0.6KA	0.6KA	0.6KA	0.6KA	0.6KA
The supply voltage		AC220V	AC220V	AC220V	AC220V	AC220V	AC220V	AC220V	AC220V
Cooper medal		No	No	Yes	Yes	Yes	Yes	Yes	Yes
Dimension (mm)	L	700	700	1900	1900	1900	1900	1900	1900
	W	600	600	800	800	800	800	800	800
	H	350	350	800	800	800	800	800	800
Cabinet Type		B3	B3	GCK	GCK	GCK	GCK	GCK	GCK
Rated Control Voltage	Start	300W	300W	325W	400W	440W	600W	600W	600W
	Normal	55W	55W	62W	90W	98W	120W	120W	120W
Weight(kg) Grade 4		16.5	17	32	40	43	95	98	135

# Auto Transfer Switch

